

THE GENIE ADVANTAGE

Genie® GS™ E-Drive Scissor Lifts



Genie®

QUALITY BY DESIGN

Genie Slab Scissor E-Drive – Focus On TCO

- ⦿ Genie customers are increasingly focused on total cost of ownership (TCO) and are using cost of ownership data to drive fleet decisions.
- ⦿ Electric drive systems can significantly **reduce TCO** and improve rental return on invested capital (rROIC).
- ⦿ Genie E-Drive scissor lifts provide **productive jobsite performance**.

Value Proposition

-35%

MAINTENANCE
COSTS

-70%

FEWER
HOSES/FITTINGS

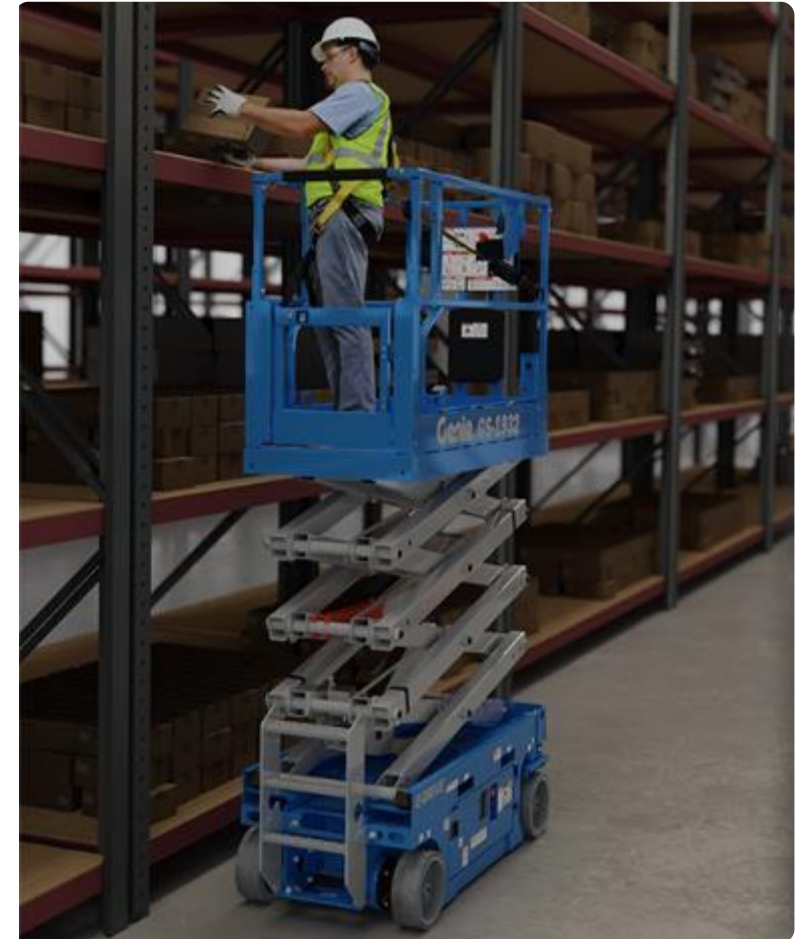
+30%

RUNTIME AND
EFFICIENCY

25%

GRADEABILITY

[VIEW SPEC SHEET FROM WEBSITE](#)

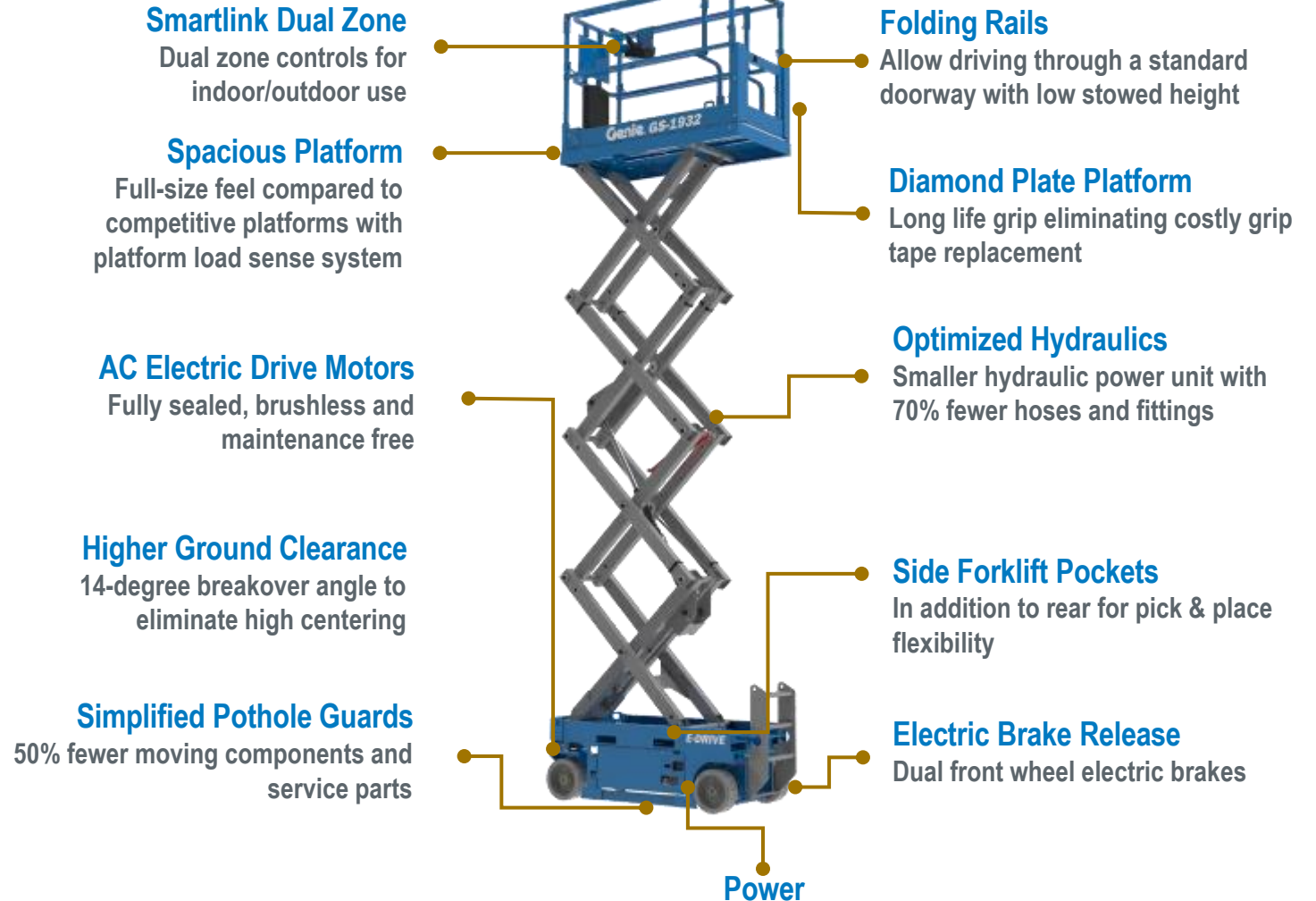


Genie® GS™ E-Drive Slab scissors

ELECTRIC SCISSORS

Main Applications

- Industrial maintenance
- Commercial Construction
- Infrastructural maintenance
- Retail & Residence facilities
- Painting
- Warehouses & Data Centers
- Hospitals
- Datacenters
- Production: Industrial Manufacturing, Chemical Processing, Food Processing
- Hospitality: Hotels, Restaurants, Cafes



[WATCH WALKAROUND VIDEO](#)

Choose from FLA, AGM or Lithium battery (depending on models)



Tech Pro™ Link

[CLICK FOR MORE INFORMATION](#)



Lift Tools Access Deck (ANSI)

[CLICK FOR MORE INFORMATION](#)



Lift Tools Work Tray

[CLICK FOR MORE INFORMATION](#)



Lift Tools Pipe Cradle

[CLICK FOR MORE INFORMATION](#)



Lift Tools Panel Carrier

[CLICK FOR MORE INFORMATION](#)



Genie E-drive Lithium-Ion

[CLICK FOR MORE INFORMATION](#)

Genie® GS™ E-Drive Slab scissors

ELECTRIC SCISSORS

⦿ Genie hydraulic oil containment system available as a factory-fit option on Genie E-Drive scissor lifts from 14 ft (4.3 m) to 40 ft (12 m). It works with standard, economical square pads that do not require time-consuming cutting or fitting. The easy-access swing-out and bolt-in trays deliver a durable solution that will not vibrate during transport and protects against hydraulic leaks on the jobsite.



Genie Lift Tools™ Spill Guard

PROTECT YOUR JOBSITE
GENIE® LIFT TOOLS™ SPILL GUARD REDUCES COSTLY LEAKS

FEATURES

- Easy access
- Bolt-in trays
- Spill guard

BENEFITS

- Simple installation
- No cutting or fitting required
- Durable construction

STANDARDS

APR CC AUG

HYDRAULIC OIL	LUBRICANTS
	1. Hydraulic Oil
	2. Grease
	3. Lubricant
	4. Hydraulic Oil
	5. Grease
	6. Lubricant
	7. Hydraulic Oil
	8. Grease
	9. Lubricant
	10. Hydraulic Oil
	11. Grease
	12. Lubricant

Genie
LIFT TOOLS

[CLICK TO ADD LINK](#)

LIFT GUARD™ WHITE NOISE ALARM has environmental advantages over a traditional tonal alarm:

- Reduces jobsite noise emissions up to 45%
- Makes it easier for onsite personnel to identify which direction the alarm is coming from



Genie Lift Tools™ White Noise Alarm

GENIE PART NUMBER*	DESCRIPTION
Factory-fit available Retrofit kit Part # 1313954GT	AWP™ Super Series IWP™ Super Series (Retrofit Kit only)
Factory-fit available Retrofit kit Part # 1313257GT	GR™ Genie Runabout® Series GRC™-12 (Retrofit Kit only) GS™ -30 series, -32 series, -46 series GS-4655 QST™ Quick Stock™ Series (Retrofit Kit only) Z®-40
Expected Q2 2023	GS-69 DC/RT GS-90 Series
Expected Q2 2023	S® Telescopic Booms Z® Articulating Booms
Factory-fit available Retrofit kit Part # 1313956GT	GTH™ Telehandlers (ANSI only)

SOUND THE ALARM

GENIE® LIFT GUARD™ WHITE NOISE ALARM

FEATURES

Range of Frequencies

Reduced Noise Disruption

Directional Alarm

BENEFITS

- Environmental improvements over conventional tonal alarms
- Up to 45% lower noise emissions over a wide range of frequencies
- Easier to identify precisely where alarm is coming from

STANDARDS

ANSI ✓ CE ✓

GENIE PART NUMBER*	DESCRIPTION
Factory-fit available Retrofit kit Part # 1313954GT	AWP™ Super Series IWP™ Super Series (Retrofit Kit only)
Factory-fit available Retrofit kit Part # 1313257GT	GR™ Genie Runabout® Series GRC™-12 (Retrofit Kit only) GS™ -30 series, -32 series, -46 series GS-4655 QST™ Quick Stock™ Series (Retrofit Kit only) Z®-40
Expected Q2 2023	GS-69 DC/RT GS-90 Series
Expected Q2 2023	S® Telescopic Booms Z® Articulating Booms
Factory-fit available Retrofit kit Part # 1313956GT	GTH™ Telehandlers

QUALITY BY DESIGN

WHITE NOISE ALARM

ORDER AT PARTS.GENIELIFT.COM

© 2022 Terex, Genie and Quality By Design are trademarks of Terex Corporation or its subsidiaries.

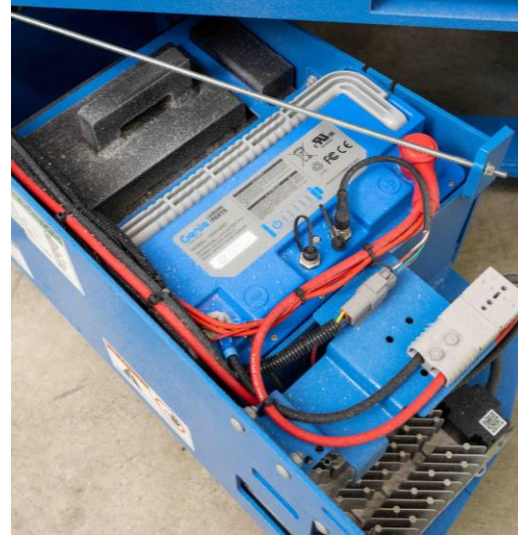
[CLICK FOR MORE INFORMATION](#)

Genie® GS™ E-Drive Slab scissors

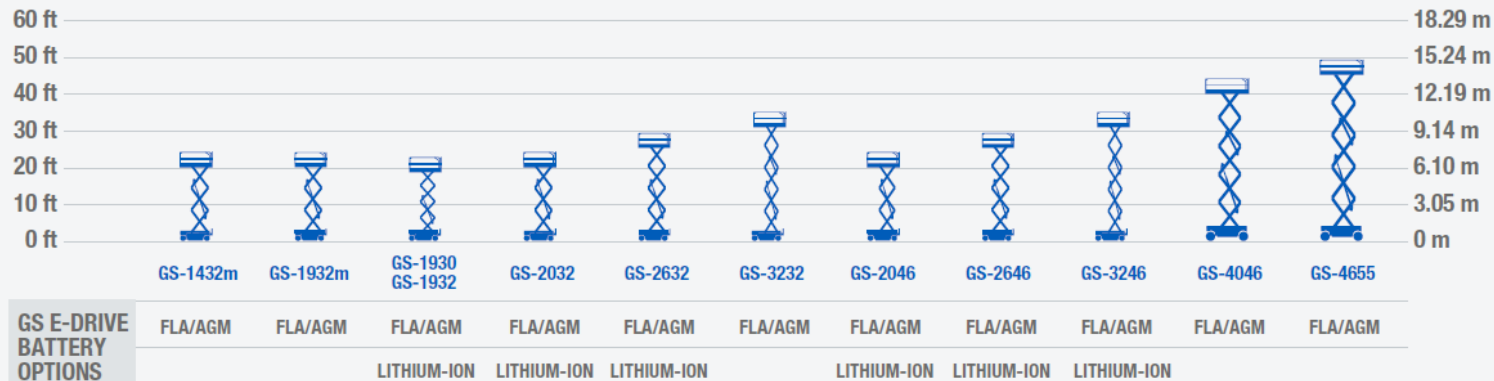
ELECTRIC SCISSORS

E-drive Lithium-Ion Battery

- Lithium batteries save time and money by eliminating maintenance such as battery watering and battery replacement. It also free-up operators' time to service other products.
- Extensively tested in all weather conditions. Genie® Lithium-Ion batteries improve jobsite productivity in hot and cold environments.
- 2.5 years of development and extensive testing led to a battery design specifically for MEWPs and UL* certified against fire, electric shock, explosion.



OUR E-DRIVE SCISSOR LIFT FAMILY



LONG LIFESPAN. LOW TCO.

GENIE® E-DRIVE LITHIUM-ION
BUILT FOR THE AERIAL INDUSTRY

ZERO

BATTERY
MAINTENANCE

5Y

BEST-IN-CLASS
LITHIUM
WARRANTY

UL*

TESTED
& CERTIFIED

#1

IN EXTREME
TEMPERATURE
PERFORMANCE

KEY FEATURES

Save an Additional 11% in TCO

Work in Extreme Heat or Cold

20% Faster Intermittent Charging

Fully-Sealed IP57

Up to 10 Years Useful Life

Battery Health Monitoring

QUALITY BY DESIGN
LEARN MORE AT GENIELIFT.COM

© 2022 Textron Corporation, Textron, Genie and Quality By Design are trademarks of Textron Corporation or its subsidiaries.

Genie E-drive Lithium-Ion battery

[CLICK FOR MORE INFORMATION](#)

What differentiates us from the competition?

- ⦿ **Less maintenance:** We use AC drive motors, which are fully sealed, IP67 protected and more energy efficient with a long battery life. In contrast, many Chinese competitors use DC drive motors, which do not offer these benefits.
- ⦿ **Superior pick-and-place capabilities:** We provide with side and rear forklift pockets, that offers superior pick-and-place capabilities when compared with most competing brands, which have only rear forklift pockets (except Haulotte on selected models).
- ⦿ **More productive:** Many competitors do not offer accessories that can enhance productivity. Choose from Genie pipe cradle, panel carrier, tool tray and much more to increase productivity safely.
- ⦿ **More maneuverable:** With front wheel drive and a zero-degree inside turning radius, our lifts are more maneuverable than all competing brands which have a higher outer turning radius.
- ⦿ **Lighter weight:** Genie's slab scissor lifts are lighter than the industry average to be loaded into elevator and to work on sensitive surfaces and second floors.



[WATCH WALKAROUND VIDEO](#)

What should I remember?

- ⦿ Brushless, maintenance-free fully-sealed AC drive motors replace hydraulic steering and represents -10% of the total TCO
- ⦿ Performant AC motors offer battery longer run time that saves battery replacements. This cost reduction participates by 6% to the total TCO
- ⦿ Tires, Platforms, Side Pockets, Loading... -19%

-35%

MAINTENANCE COSTS

-70%

FEWER HOSES/FITTINGS

- ⦿ Fewer hoses and fittings means fewer service touch points, fewer service calls and fewer replacement parts. It also contributes to a lower chance for hydraulic leaks, which, although infrequent, can be time consuming and costly to clean up.

- ⦿ Based on industry-standard HIRD cycle testing, E-Drive scissor lifts have shown a 30% increase in runtime per charge and better torque.

+30%

RUNTIME AND EFFICIENCY

25%

GRADEABILITY

- ⦿ A 14° breakover angle which eliminates high centering means improved capabilities to climb ramps without bottoming out